



## The Key

If your child has a moderate to severe medical or educational needs and is under 25 years old, you can register to join The Key for free.

You'll benefit from:

- Customised information on services and benefits for disabled children and young people in Gloucestershire
- A free/discounted leisure pass for the child
- Contact with other families for mutual, informal support

### How To Join

You may join online or complete the form below and return to:

Family Information Service, Shire Hall,  
Westgate Street, Gloucester, GL1 2TP

[www.glofamiliedirectory.org.uk/thekey](http://www.glofamiliedirectory.org.uk/thekey)

(IN CAPITALS PLEASE)

Name of child/young person:

.....

Date of birth: .....

Address: .....

.....

Postcode: .....

Telephone: .....

Email: .....

Your Full Name: .....

Relationship to child/young person: .....

Signed: .....



## Family Information Service

Free, impartial information, advice and guidance for all families with children and young people aged 0 - 19 years (up to 25 years for those with Special Educational Needs and Disabilities) and practitioners working with families.

**If you don't know who to ask...**

**ask us!**

Direct Line 01452 427362

Freephone 0800 542 02 02

Monday to Friday 9am to 5pm  
(answering machine at all other times)

[familyinfo@gloucestershire.gov.uk](mailto:familyinfo@gloucestershire.gov.uk)

**glofamiliedirectory**

[www.glofamiliedirectory.org.uk](http://www.glofamiliedirectory.org.uk)

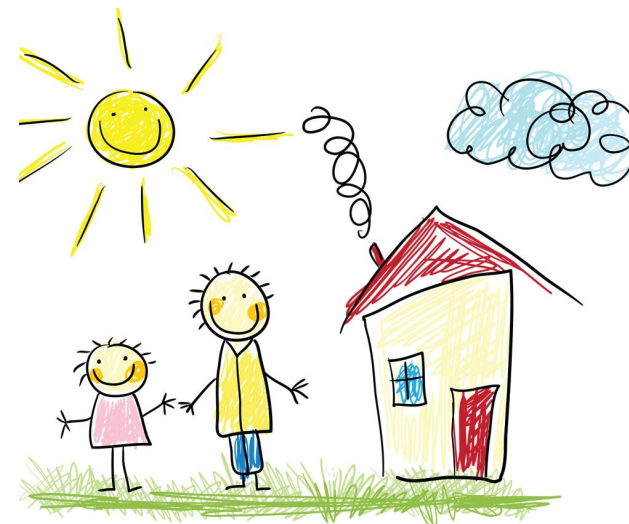


Family Information Service -  
Gloucestershire



**Gloucestershire**  
COUNTY COUNCIL

# Family Information Service



Free impartial information, advice signposting and support for all children, young people and their families in Gloucestershire.

Family Information Service is part of the Early Help Partnership.



## Family Information Directory

Family Support & Advice

Childcare

Education

Young People

Things to do

### I'm a parent ...

**Family Information Directory** - A wide range of resources, signposting, information, advice and guidance on issues affecting family life such as separation, benefit entitlements, internet safety, domestic abuse, addiction, school and much more.

**Early Help** - Ensuring the right support is found as soon as a problem arises, before it gets worse.

**Childcare** - Free to access details on Ofsted registered childcare providers, their ratings, contact details and funding information.

**Activities & Things to do** - Upcoming events and ongoing local activities such as baby and toddler groups, sports clubs, plus school holiday day camps.

## Local Offer

Young People's Local Offer

Parent and Carers Local Offer

### My child has additional needs ...

**The Local Offer** - Information for children and young people aged 0-25 years with Special Educational Needs and Disabilities (SEND) and their families including health and social care, support groups, education, leisure activities and preparing for adulthood.

**Autism Services** - Helping young people and their families living in Gloucestershire, find out about local autism services.

## Training and Workshops

Parent/Carer

Practitioner

**Parent/Carer** - Free courses for parents and carers around the county such as Triple P, 'You & Me, Mum', Stepping Stones and Solihull. We can help you find the right one for you.

**Practitioner** - A range of multi-disciplinary training and workshops, including the Early Help Graduated Pathway, for practitioners working with children and families.

## Information for Practitioners

Grants, Charities & Commissioned Services

Graduated Pathway of Early Help

Practitioner Resources, Contacts &

SENCo Toolkit

Childcare Providers

Legislation, Guidance & Policy Documents

Training, Providers & Newsletters

### I'm a practitioner ...

**Information for Practitioners** - A centralised point of reference for practitioners. This section has been designed to support work with families to ensure you and they have the most up to date information, resources and contacts. You can also register and log in for centralised access to restricted service details, referral forms and advice.

**Graduated Pathway** - One single pathway to follow when you identify a child or young person with additional needs, including SEND, with forms and guidance notes.

**SENCo Toolkit** - Useful resources, tools and information to support SENCOs.